

Thalidomide-O-PEG2-amine

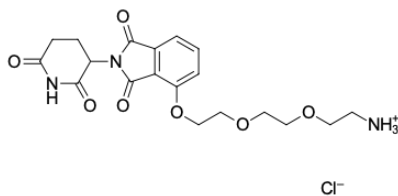
<http://hk.lumiprobe.com/p/thalidomide-o-peg2-amine>

Thalidomide-containing building block with PEG2-linker and amino group, which can be conjugated to other functionalized linkers and target protein ligands.

The amino group is highly reactive and can undergo reactions with carboxylic acids, activated esters (NHS, STP, etc.), carbonyls (such as ketones and aldehydes), and more.

Proteolysis targeting chimeras (PROTACs) are cell-permeable heterobifunctional molecules that can remove specific proteins from the cell. One end of such molecule contains a ligand to bind to the target, and the second end recruits the E3 ligase complex. Close proximity results in substrate polyubiquitination and subsequent protein degradation by cellular proteasome.

There are several types of E3 ligases that are practically suitable for such a purpose. Thalidomide is the ligand capable of recruiting Cereblon (CRBN) E3 ligase.



外观: 白色結晶固體

分子量: 441.86

CAS 编号: 1957236-10-0 (hydrochloride)

分子式: C₁₉H₂₄ClN₃O₇

溶解度:

质量控制: NMR ¹H 和 HPLC-MS (95+%)

储存条件:

法律声明: 本產品僅供研究目的提供和銷售。本產品並未經過食品、藥品、醫療器械、化妝品等領域的安全性和效力測試, 且未經明示或暗示授權用於其他任何用途, 包括但不限於體外診斷、人類或動物用途, 以及商業用途。