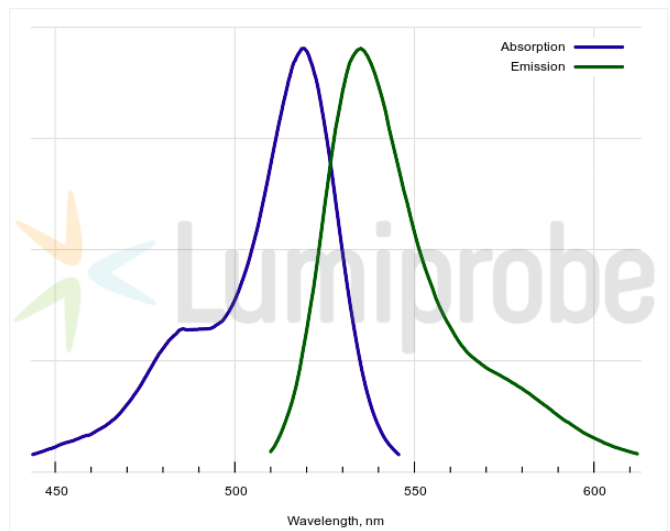
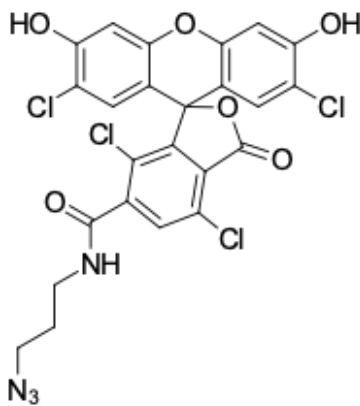


## TET azide, 6-isomer

<http://hk.lumiprobe.com/p/tet-azide-6>

TET (tetrachlorofluorescein) is a green-fluorescent fluorescein derivate with absorption maximum at 519 nm and emission maximum at 535 nm. TET is spectrally similar to R6G, JOE, and VIC, widely used for labeling PCR probes.

Oligonucleotides labeled with TET are often used in real-time PCR; the preparation of such oligonucleotides can be performed using click chemistry. This derivative is an azide, a pure 6-isomer, for conjugating TET to other molecules by copper-catalyzed and copper-free click reactions.



外观:

分子量: 596.21

CAS 编号: 1450752-90-5

分子式:  $C_{24}H_{14}Cl_4N_4O_6$

溶解度:

质量控制:

储存条件:

法律声明:

本產品僅供研究目的提供和銷售。本產品並未經過食品、藥品、醫療器械、化妝品等領域的安全性和效力測試，且未經明示或暗示授權用於其他任何用途，包括但不限於體外診斷、人類或動物用途，以及商業用途。

激发/吸收极大值, 纳米: 519

$\epsilon$ , 摩尔吸光系数,  $cm^{-1}$ : 100000

发射极大值, 纳米: 535

荧光量子产率: 0.47

$CF_{260}$ : 0.17

$CF_{280}$ : 0.09