

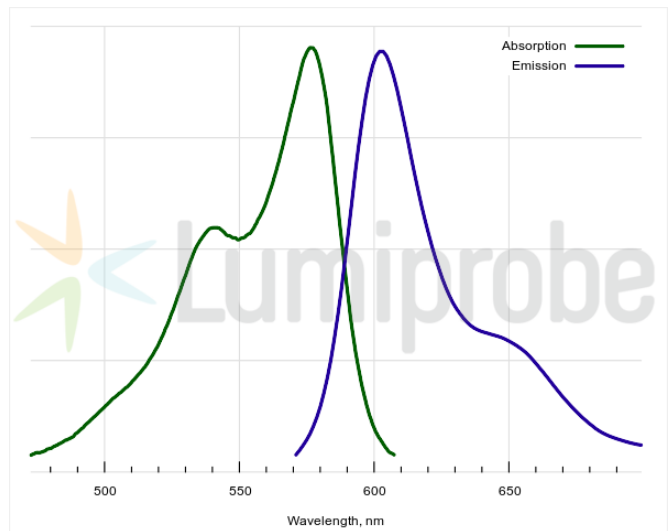
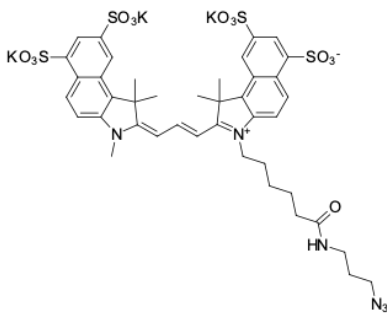
sulfo-Cyanine3.5 azide

<http://hk.lumiprobe.com/p/sulfo-cy35-azide>

sulfo-Cyanine3.5 is a fluorescent dye with absorption and emission spectra between those of Cyanine3 and Cyanine5. Because of its spectral characteristics, this fluorophore is widely used in BRET and FRET experiments both as a pair donor and acceptor.

sulfo-Cyanine3.5 is a sulfonated derivative of Cyanine3.5 dye because it contains four additional sulfo groups, which ensures high water solubility of the dye and its conjugates. This allows working with this reagent in aqueous solutions without adding organic solvents.

This reagent is an azide derivative of sulfo-Cyanine3.5 dye for click chemistry reactions. The azide group allows conjugating the fluorophore with molecules containing alkyne or cycloalkyne groups, including various biomolecules, small molecules, and polymers, using copper-catalyzed click chemistry and copper-free SPAAC reaction.



外观:

质谱 M+ 增量: 959.2

分子量: 1073.37

分子式: $C_{41}H_{43}N_6K_3O_{13}S_4$

溶解度:

质量控制:

储存条件:

法律声明:

本產品僅供研究目的提供和銷售。本產品並未經過食品、藥品、醫療器械、化妝品等領域的安全性和效力測試，且未經明示或暗示授權用於其他任何用途，包括但不限於體外診斷、人類或動物用途，以及商業用途。

激发/吸收极大值, 纳米: 576

ϵ , 摩尔吸光系数, cm^{-1} : 139000

发射极大值, 纳米: 603

荧光量子产率: 0.11

CF₂₆₀: 0.16

CF₂₈₀: 0.17