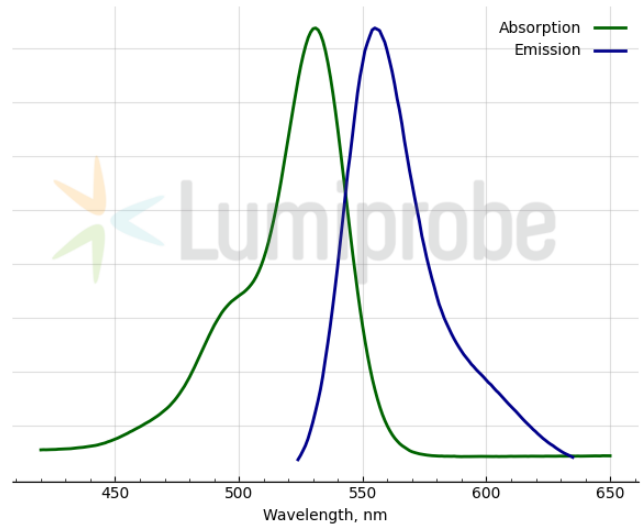
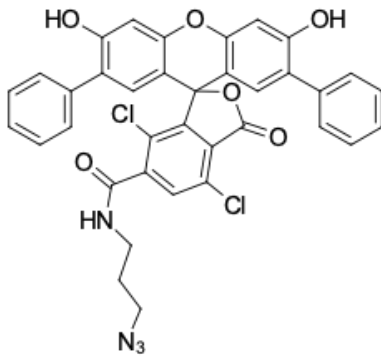


SIMA azide, 6-isomer

<http://hk.lumiprobe.com/p/sima-azide-6>

SIMA (dichloro-diphenyl-fluorescein) is a dye with spectral properties similar to HEX but with a higher quantum yield.

SIMA azide is used to produce fluorescently labeled primers and hybridization probes for quantitative PCR. Oligonucleotides with a SIMA label can be easily generated via azide-alkyne cycloaddition between SIMA azide and alkyne-containing oligonucleotide.



外观:

分子量: 679.52

分子式: $C_{36}H_{24}Cl_2N_4O_6$

溶解度:

质量控制:

储存条件:

法律声明:

本產品僅供研究目的提供和銷售。本產品並未經過食品、藥品、醫療器械、化妝品等領域的安全性和效力測試，且未經明示或暗示授權用於其他任何用途，包括但不限於體外診斷、人類或動物用途，以及商業用途。

激发/吸收极大值, 纳米: 531

ϵ , 摩尔吸光系数, cm^{-1} : 92300

发射极大值, 纳米: 555

荧光量子产率: 0.63

CF_{260} : 0.57

CF_{280} : 0.18