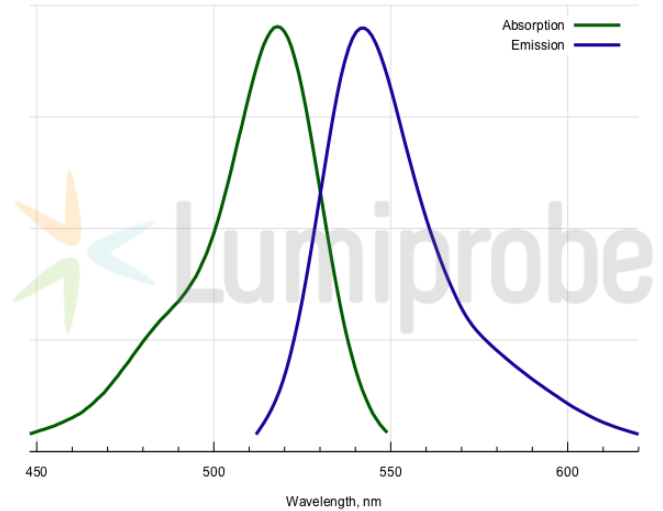
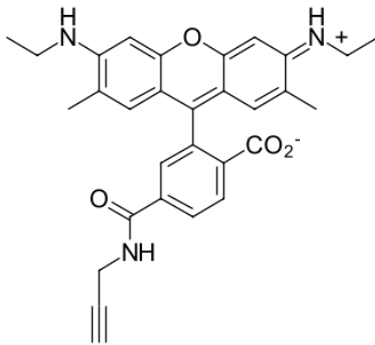


R6G alkyne, 6-isomer

<http://hk.lumiprobe.com/p/r6g-alkyne-6>

Rhodamine 6G (R6G) is a xanthene dye of rhodamine series. Compared to fluorescein, its emission is shifted to red. It is also much more photostable. The fluorophore has a high quantum yield.

This R6G product contains a terminal alkyne moiety for the conjugation with azides in the presence of copper (I) catalyst.



外观:

质谱 M+ 增量: 494.2

分子量: 495.57

分子式: C₃₀H₂₉N₃O₄

溶解度:

质量控制:

储存条件:

法律声明:

本產品僅供研究目的提供和銷售。本產品並未經過食品、藥品、醫療器械、化妝品等領域的安全性和效力測試，且未經明示或暗示授權用於其他任何用途，包括但不限於體外診斷、人類或動物用途，以及商業用途。

激发/吸收极大值, 纳米: 518

ε, 摩尔吸光系数, cm⁻¹: 116000

发射极大值, 纳米: 542

荧光量子产率: 0.95

CF₂₆₀: 0.18

CF₂₈₀: 0.17