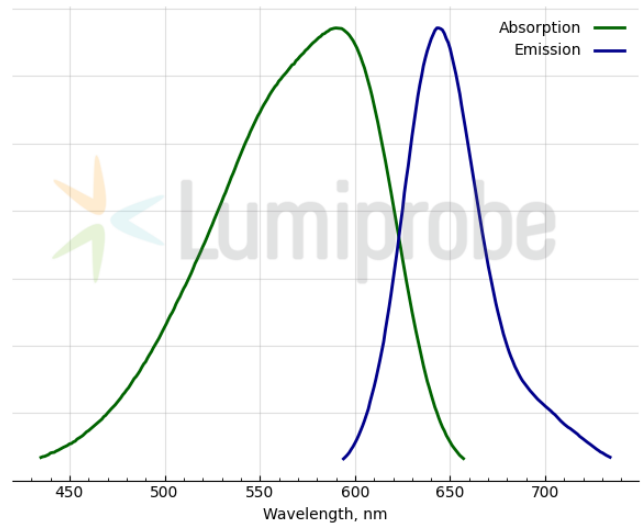
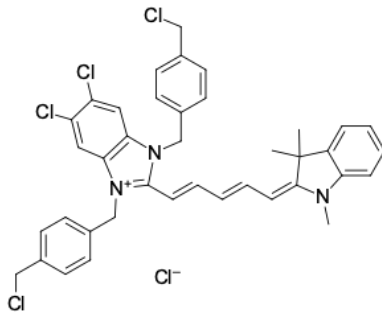


LumiTracker® Mito Red FM

<http://hk.lumiprobe.com/p/mitotracker-red-fm>

LumiTracker Mito Red FM is a cationic, red-fluorescent dye that stains mitochondria in live cells. The dye passively diffuses across the plasma membrane and selectively accumulates in active mitochondria based on their membrane potential; therefore, it is often used to assess cells' health and as a dye for mitochondrial localization.

The fluorescence of LumiTracker Mito Red FM disappears after fixation with aldehydes, so this dye is only suitable for working with living cells.



外观:

分子量: 724.00

分子式: $C_{39}H_{36}Cl_5N_3$

质量控制:

储存条件:

法律声明:

本產品僅供研究目的提供和銷售。本產品並未經過食品、藥品、醫療器械、化妝品等領域的安全性和效力測試，且未經明示或暗示授權用於其他任何用途，包括但不限於體外診斷、人類或動物用途，以及商業用途。

激发/吸收极大值, 纳米: 590

ϵ , 摩尔吸光系数, cm^{-1} : 74000

发射极大值, 纳米: 643

荧光量子产率: 0.14