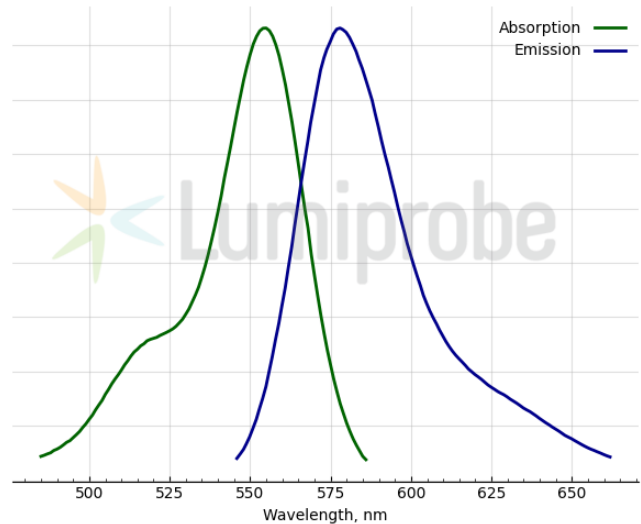
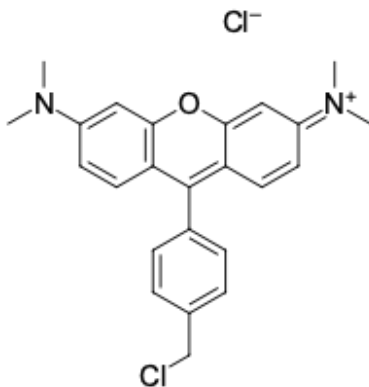


## LumiTracker® Mito Orange CMTMRos

<http://hk.lumiprobe.com/p/mitotracker-orange-cmtmros>

LumiTracker Mito Orange CMTMRos is a cationic, orange-fluorescent dye for staining active mitochondria in live cells. CMTMRos is a hydrophobic compound that passively diffuses across the plasma membrane and selectively accumulates in active mitochondria based on their membrane potential. LumiTracker Mito Orange CMTMRos is compatible with aldehyde fixation. This dye is useful to indicate cell health as well as for mitochondria localization.



外观:	黑色晶體
分子量:	427.38
CAS 编号:	199116-50-2
分子式:	C <sub>24</sub> H <sub>24</sub> Cl <sub>2</sub> N <sub>2</sub> O
质量控制:	NMR <sup>1</sup> H 和 HPLC-MS (95+%)
储存条件:	收到後 -20°C 避光保存 24 個月。運輸: 室溫最多可保存3週。乾燥。
法律声明:	本產品僅供研究目的提供和銷售。本產品並未經過食品、藥品、醫療器械、化妝品等領域的安全性和效力測試, 且未經明示或暗示授權用於其他任何用途, 包括但不限於體外診斷、人類或動物用途, 以及商業用途。

激发/吸收极大值, 纳米: 555

ε, 摩尔吸光系数, cm<sup>-1</sup>: 100000

发射极大值, 纳米: 578

荧光量子产率: 0.64