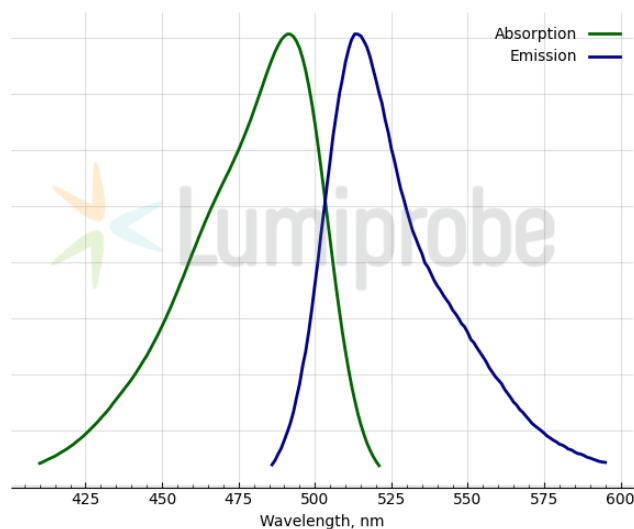
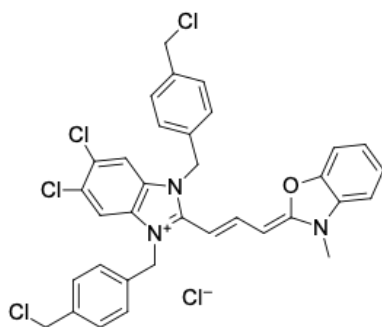


## LumiTracker® Mito Green FM

<http://hk.lumiprobe.com/p/mitotracker-green-fm>

LumiTracker Mito Green FM is a cationic green-fluorescent dye that stains mitochondria in live cells. The dye passively diffuses across the plasma membrane and selectively accumulates in active mitochondria based on their membrane potential; therefore, it is often used to assess cells' health and as a dye for mitochondrial localization.

The fluorescence of LumiTracker Mito Green FM disappears after fixation with aldehydes, so this dye is only suitable for working with living cells.



外观:

分子量: 671.88

分子式:  $C_{34}H_{28}Cl_5N_3O$

质量控制:

储存条件:

法律声明: 本產品僅供研究目的提供和銷售。本產品並未經過食品、藥品、醫療器械、化妝品等領域的安全性和效力測試，且未經明示或暗示授權用於其他任何用途，包括但不限於體外診斷、人類或動物用途，以及商業用途。

激发/吸收极大值, 纳米: 491

$\epsilon$ , 摩尔吸光系数,  $cm^{-1}$ : 93500

发射极大值, 纳米: 513