

LumiTracker® Lyso Blue

<http://hk.lumiprobe.com/p/lumitracker-lyso-blue-dnd-22>

LumiTracker® Lyso Blue is a blue-emitting dye that selectively accumulates in cellular organelles with acidic contents. It is widely used to stain live lysosomes that maintain a low internal pH by an ATP-dependent proton pump providing optimal conditions for the activity of digestive enzymes.

LumiTracker® Lyso Blue contains several amino groups that act as a weak base. At neutral pH, they are not completely protonated, and the dye molecule remains relatively neutral, thus allowing better cell membrane permeability. Getting into lysosomes with an acidic pH, the dye is likely to become protonated and thus remains in the organelle with a low pH.

Live-cell labeling is performed using nanomolar concentrations of LumiTracker® Lyso Blue without the use of detergents. The protonation of the dye promotes local alkalizing, so it is recommended to perform staining of living cells for no more than 7 minutes just before visualization with fluorescent microscopy.

LumiTracker® Lyso Blue exhibits an absorption maximum at 373 nm and an emission maximum at 422 nm. We also offer [LumiTracker® Lyso Green](#) and [LumiTracker® Lyso Red](#) for lysosome imaging in the green and red channels.

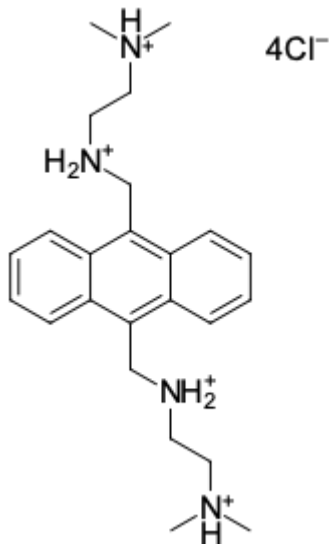
LumiTracker® Lyso Blue is supplied as a 1 mM solution in DMSO.

Usage

Working concentration: 50-75 nM.*

Staining: 3-7 minutes at 37 °C in 1× PBS (just before visualization).

*Depending on the cell line, working concentration or incubating time may be changed



外观: 黄色液體

分子量: 524.41

CAS 编号: 215247-93-1

分子式: C₂₄H₃₈Cl₄N₄

质量控制: NMR ¹H 和 HPLC-MS (95+%)

储存条件: 收到後 -20°C 避光保存 24 個月。運輸: 室溫最多可保存3週。乾燥。

法律声明: 本產品僅供研究目的提供和銷售。本產品並未經過食品、藥品、醫療器械、化妝品等領域的安全性和效力測試, 且未證明示或暗示授權用於其他任何用途, 包括但不限於體外診斷、人類或動物用途, 以及商業用途。

LysoTracker™ 是 Molecular Probes Inc. 在某些國家的註冊商標。