

Lucifer Yellow CH

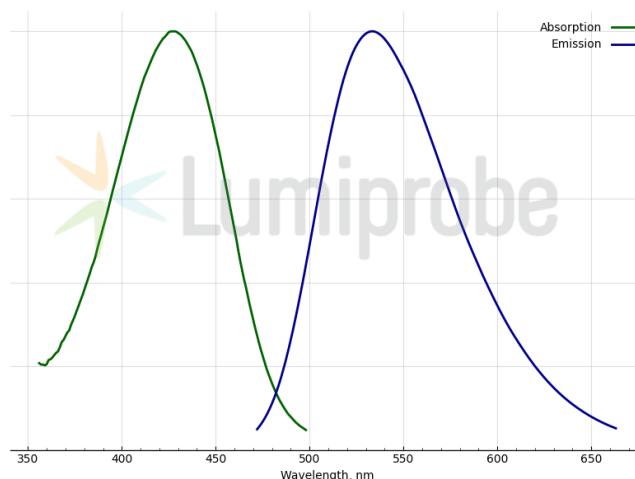
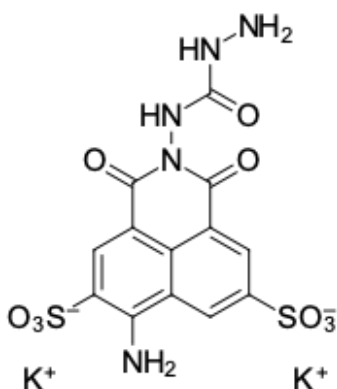
<http://hk.lumiprobe.com/p/lucifer-yellow-ch>

Lucifer Yellow CH is a highly sensitive yellow fluorescent dye widely used in neurobiology, cytology, and molecular biology for cell tracing, studying cell-cell interactions, and visualizing neurons. The dye is suitable for labeling both live and fixed preparations: it has low cytotoxicity, is retained in cells after fixation (e.g., with paraformaldehyde), and is compatible with most immunochemistry protocols. Lucifer Yellow CH has a high quantum yield, is resistant to photobleaching, and is, therefore, ideal for confocal and fluorescence microscopy.

The main dye application:

- Neuronal tracking: Dye injection allows for tracking the morphology of axons and dendrites *in vivo* and *in vitro*.
- Iontophoresis: Used to label individual cells in electrophysiological studies.
- Transfection: Compatible with microinjection and electroporation methods.

Working dye concentration: 1-5% (depending on protocol).



外观:

分子量: 521.57

CAS 编号: 71206-95-6 (dipotassium salt); 67769-47-5 (dilithium salt)

分子式: $C_{13}H_9K_2N_5O_9S_2$

溶解度: 水中良好

质量控制: NMR 1H 和HPLC-MS (95+%)

储存条件: 接收後24個月在黑暗中-20°C。運輸: 在室溫下最多3週。乾燥。

法律声明: 本產品僅供研究目的提供和銷售。本產品並未經過食品、藥品、醫療器械、化妝品等領域的安全性和效力測試，且未經明示或暗示授權用於其他任何用途，包括但不限於體外診斷、人類或動物用途，以及商業用途。

激发/吸收极大值, 纳米: 428

发射极大值, 纳米: 533