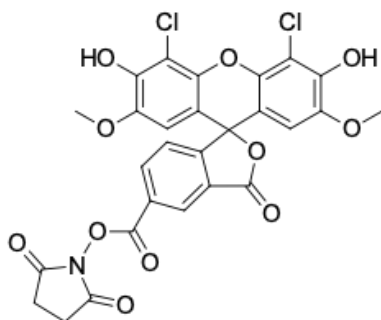


JOE NHS ester, 5-isomer

<http://hk.lumiprobe.com/p/joe-nhs-ester-5>

JOE is a fluorescein-derived xanthenone dye containing methoxy groups and chlorine atoms. Its absorption and emission spectra are between FAM and TAMRA/ROX channels. For this reason, this fluorophore is often used for multiplex detection, including DNA sequencing.

This derivative is an activated N-hydroxysuccinimide ester used to label proteins, peptides, amino-modified oligonucleotides, and other target molecules via conjugation with amines.



外观:

分子量: 602.33

CAS 编号: 113394-24-4

分子式: $C_{27}H_{17}Cl_2NO_{11}$

质量控制:

储存条件:

激发/吸收极大值, 纳米: 533

ϵ , 摩尔吸光系数, cm^{-1} : 75000

发射极大值, 纳米: 554

荧光量子产率: 0.61

CF_{260} : 0.36

CF_{280} : 0.28