

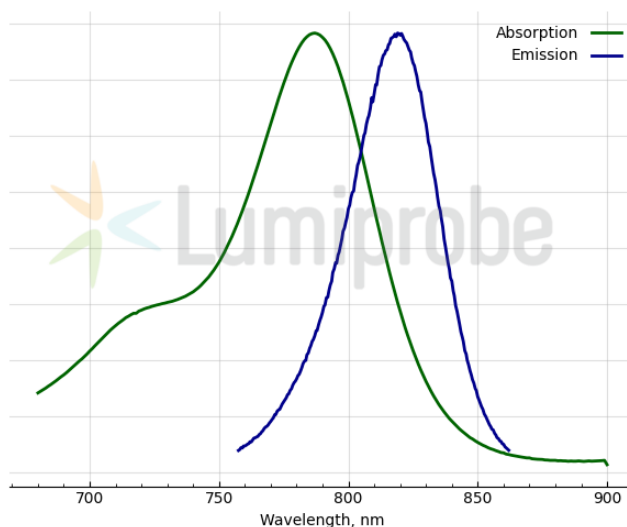
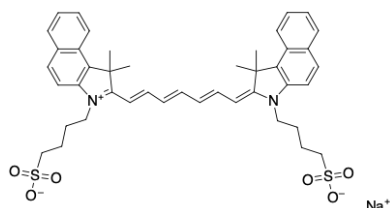
Indocyanine Green (ICG)

<http://hk.lumiprobe.com/p/icg-3599-32-4>

Indocyanine Green (aka ICG, IC Green, Foxgreen) is used for reliable imaging and flow cytometry. This dye is water-soluble and pH-insensitive. The fluorescence of Indocyanine Green is not visible to the human eye but is readily detected by most imaging systems.

Indocyanine Green binds tightly to plasma proteins and becomes confined to the vascular system. The dye has a half-life of 150 to 180 sec and is removed from circulation exclusively by the liver to bile juice.

Indocyanine Green is used for determining cardiac output, hepatic function, liver and gastric blood flow, and for ophthalmic angiography.



外观:

分子量: 774.96

CAS 编号: 3599-32-4

分子式: $C_{43}H_{47}N_2NaO_6S_2$

质量控制:

储存条件:

法律声明: 本產品僅供研究目的提供和銷售。本產品並未經過食品、藥品、醫療器械、化妝品等領域的安全性和效力測試，且未經明示或暗示授權用於其他任何用途，包括但不限於體外診斷、人類或動物用途，以及商業用途。

激发/吸收极大值, 纳米: 787

ϵ , 摩尔吸光系数, cm^{-1} : 232000

发射极大值, 纳米: 819

荧光量子产率: 0.09