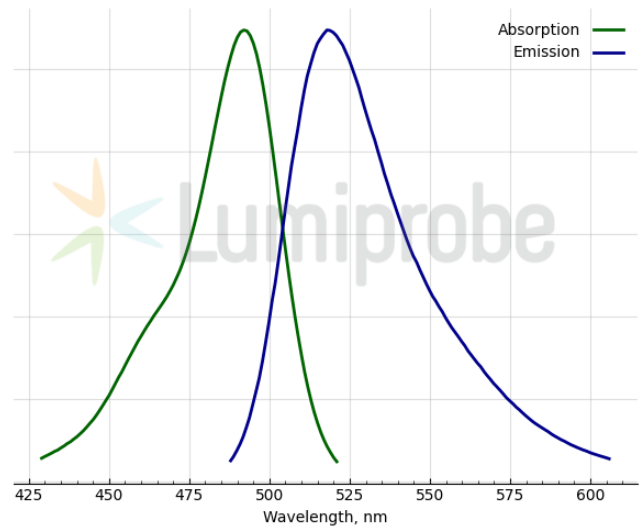
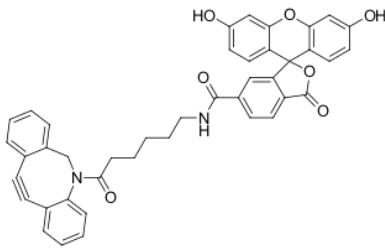


FAM DBCO, 6-isomer

<http://hk.lumiprobe.com/p/fam-dbc0-6>

Fluorescein (FAM) is one of the oldest yet well-known fluorescent dyes. This derivative of FAM contains the cyclooctyne group (dibenzocyclooctyne, DBCO or ADIBO). Pure 6-isomer. DBCO reacts quickly and efficiently with azides by simply mixing the components without the need for a copper catalyst (so-called sterically promoted cycloaddition reaction or SPAAC).

FAM DBCO can be used for the labeling of proteins, peptides, nucleic acids, and other molecules containing azide groups. Fluorescein can be detected using a variety of different instruments.



外观:

分子量: 676.71

分子式: $C_{42}H_{32}N_2O_7$

溶解度:

质量控制:

储存条件:

法律声明:

激发/吸收极大值, 纳米: 492

ϵ , 摩尔吸光系数, cm^{-1} : 74000

发射极大值, 纳米: 517

荧光量子产率: 0.93