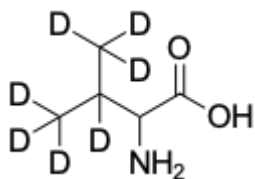


Valine-d7

<http://hk.lumiprobe.com/p/dl-valine-d7>

Valine is an essential glucogenic branched-chain amino acid (BCAA). A high level of valine could be a marker of Maple syrup urine disease (MSUD), a disorder characterized by progressive ketoacidosis, caused by a deficiency in branched-chain dehydrogenase, the enzyme that catabolizes valine, isoleucine, and leucine. A low level of valine could be a sign of Crohn's disease, celiac disease or hepatic encephalopathy.

D,L-Valine-d7 is the deuterium-labeled valine and is intended for use as an analytical reference standard in LC-MS. For correct measurement of valine in blood with mass spectrometry one should use valine-d7 as an internal standard.



外观: 白色粉末

分子量: 124.19

分子式: C₅H₄D₇NO₂

溶解度: 在水裡

质量控制: NMR ¹H 和 HPLC-MS (95+%, D: 98+%)

储存条件:

法律声明: 本產品僅供研究目的提供和銷售。本產品並未經過食品、藥品、醫療器械、化妝品等領域的安全性和效力測試，且未經明示或暗示授權用於其他任何用途，包括但不限於體外診斷、人類或動物用途，以及商業用途。