

Cyanine3 maleimide

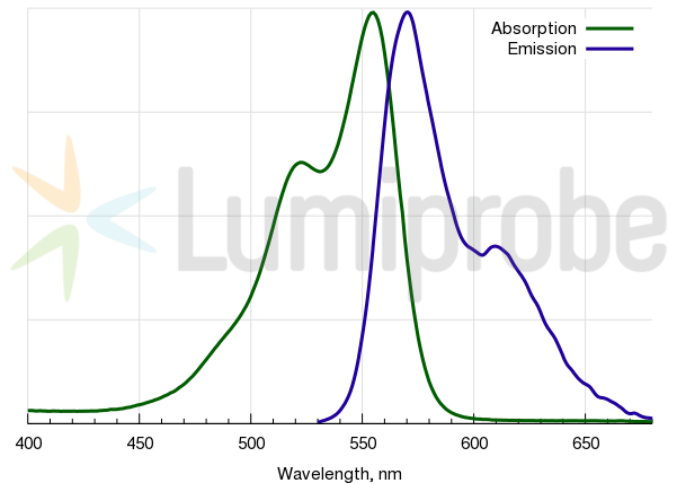
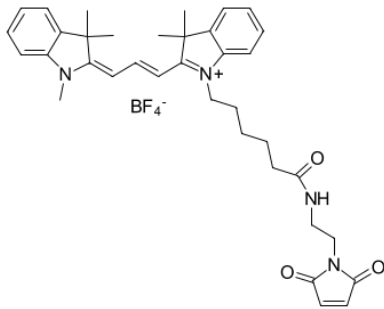
<http://hk.lumiprobe.com/p/cy3-maleimide>

Thiol mono-reactive Cyanine3 dye. This reagent can be used to attach Cyanine3 fluorophore (an analog of Cy3®) to proteins and peptides containing cysteine residues, as well as to other thiolated molecules (such as thiol-containing oligonucleotides).

Cystines should be reduced with TCEP (tris-carboxyethylphosphine) or other appropriate reductant prior to the labeling.

Labeling with Cyanine3 maleimide is selective, and efficient.

We recommend using water-soluble [Sulfo-Cyanine3 maleimide](#) for the labeling of antibodies and other sensitive proteins.



外观:

分子量: 666.56

分子式: $C_{36}H_{43}N_4O_3BF_4$

溶解度:

质量控制:

储存条件:

激发/吸收极大值, 纳米: 555

ϵ , 摩尔吸光系数, cm^{-1} : 150000

发射极大值, 纳米: 570

荧光量子产率: 0.31

CF_{260} : 0.04

CF_{280} : 0.09