

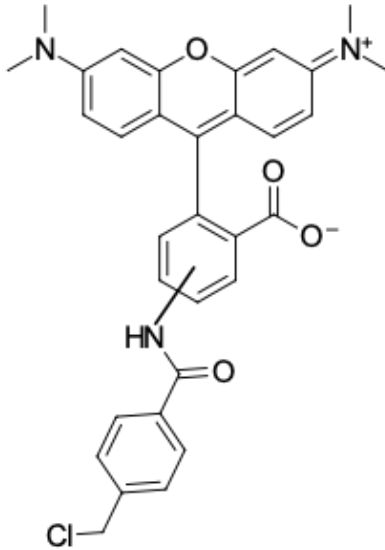
CytoTracer Orange CMTMR

<http://hk.lumiprobe.com/p/cmtmr-celltracker-orange>

CytoTracer Orange CMTMR is an orange fluorescent dye for labeling and long-term tracing of living cells. In working concentrations, the dye has little cytotoxicity and minimal effects on the proliferative ability or biology of the cell. It can be used to analyze cell proliferation, viability, localization, and motility for *in vivo* and *in vitro* assays.

CytoTracer Orange CMTMR is a cell-permeant stain that converts into cell-impermeant reaction products inside the cell. During proliferation, the label is transferred to daughter cells, but not adjacent cells in the population, and labeled cells keep the fluorescence for at least 72 hours or through three to six cell generations.

CytoTracer Orange CMTMR contains a chloromethyl group that reacts with thiol groups of internal cell components, utilizing a glutathione S-transferase-mediated reaction. This allows the stain to remain in cells after fixation and permeabilization steps and be used for subsequent immunofluorescence applications.



外观: 紅色固體

分子量: 554.0

CAS 编号: 323192-14-9

分子式: C₃₂H₂₈ClN₃O₄

IUPAC 名称: 9-[2-carboxy-4(or 5)-[[4-(chloromethyl)benzoyl]amino]phenyl]-3,6-bis(dimethylamino)-xanthylum, inner salt

质量控制: NMR ¹H 和 HPLC-MS (95+%)

储存条件: 收到後 -20°C 避光保存 24 個月。運輸: 室溫最多可保存3週。乾燥。

法律声明: 本產品僅供研究目的提供和銷售。本產品並未經過食品、藥品、醫療器械、化妝品等領域的安全性和效力測試, 且未經明示或暗示授權用於其他任何用途, 包括但不限於體外診斷、人類或動物用途, 以及商業用途。