

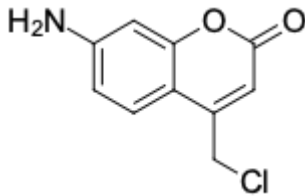
## CytoTracer Blue CMAC

<http://hk.lumiprobe.com/p/cmaccelltracker-blue>

CytoTracer Blue CMAC is a blue fluorescent dye for labeling and long-term tracing of living cells. In working concentrations, the dye has little cytotoxicity and minimal effects on the proliferative ability or biology of the cell. It can be used to analyze cell proliferation, viability, localization, and motility for *in vivo* and *in vitro* assays.

CytoTracer Blue CMAC is a cell-permeant stain that converts into cell-impermeant reaction products inside the cell. During proliferation, the label is transferred to daughter cells, but not adjacent cells in the population, and labeled cells keep the fluorescence for at least 72 hours or through three to six cell generations.

CytoTracer Blue CMAC contains a chloromethyl group that reacts with thiol groups of internal cell components, utilizing a glutathione S-transferase-mediated reaction. This allows the stain to remain in cells after fixation and permeabilization steps and be used for subsequent immunofluorescence applications.



外观:

分子量: 209.63

CAS 编号: 147963-22-2

分子式: C<sub>10</sub>H<sub>8</sub>ClNO<sub>2</sub>

溶解度: 適合 DMSO、DMF

质量控制: NMR <sup>1</sup>H 和 HPLC-MS (95+%)

储存条件: 收到後在-20°C 黑暗環境下保存 24 個月。運輸: 室溫最多可保存3週。乾燥。

法律声明: 本產品僅供研究目的提供和銷售。本產品並未經過食品、藥品、醫療器械、化妝品等領域的安全性和效力測試, 且未經明示或暗示授權用於其他任何用途, 包括但不限於體外診斷、人類或動物用途, 以及商業用途。