

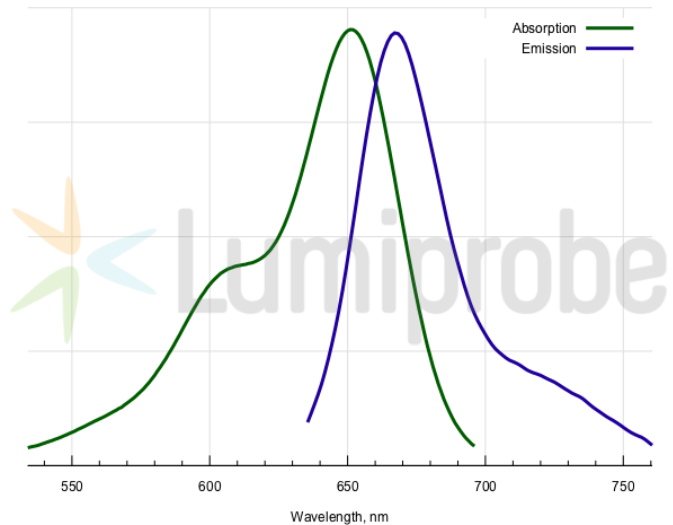
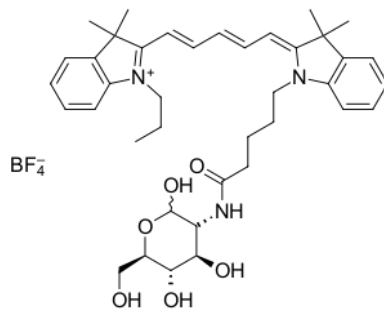
CDr17 M1 Macrophage Stain

<http://hk.lumiprobe.com/p/cdr17-m1-macrophage-stain>

CDr17 is a selective small-molecule fluorescent probe designed for the identification and tracking of M1 macrophages. The labeling method is based on the higher expression of the GLUT1 transporter in M1 (pro-inflammatory) macrophages compared to M0 (resting) and M2 (anti-inflammatory) macrophages. CDr17 probe is composed of a glucose scaffold and a 2-position Cyanine5 fluorophore, and due to this, it is taken up into cells specifically through the GLUT1 transporter. The CDr17 accumulation is directly proportional to GLUT1 expression levels.

CDr17 has been demonstrated to track M1 macrophages *in vivo* in a rheumatoid arthritis animal model ^[1].

[1] Cho H. et al. Visualizing inflammation with an M1 macrophage selective probe via GLUT1 as the gating target. Nat. Commun. 2022. 13. 5974.



外观:

分子量: 745.66

分子式: $C_{39}H_{52}BF_4N_3O_6$

溶解度:

质量控制: NMR ¹H和HPLC-MS (95+%)

储存条件: 接收後24個月在黑暗中-20°C。運輸: 在室溫下最多3週。乾燥。

法律声明: 本產品僅供研究目的提供和銷售。本產品並未經過食品、藥品、醫療器械、化妝品等領域的安全性和效力測試，且未經明示或暗示授權用於其他任何用途，包括但不限於體外診斷、人類或動物用途，以及商業用途。

激发/吸收极大值, 纳米: 646

发射极大值, 纳米: 662