

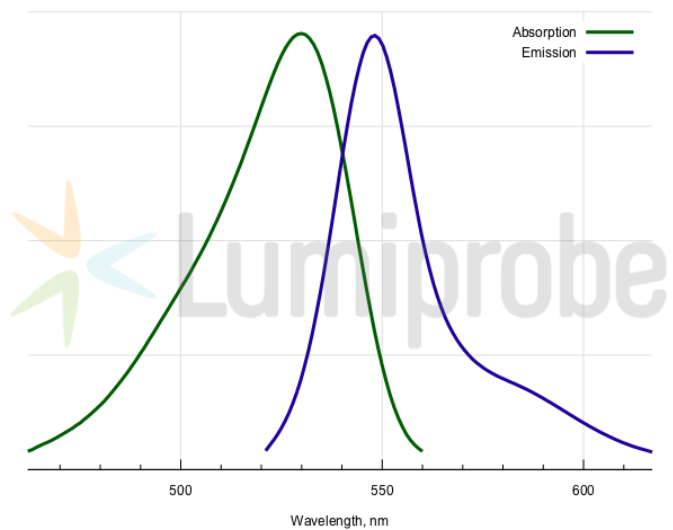
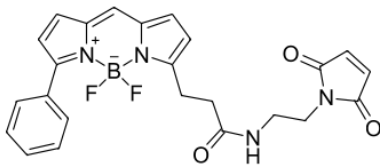
BDP R6G maleimide

<http://hk.lumiprobe.com/p/bdp-r6g-maleimide>

BDP R6G is a borondipyrromethene fluorophore whose absorption and emission spectra match those of rhodamine 6G (R6G) dye.

Thiol labeling is often an option of choice for the modification of proteins. Limited number of cysteine residues in proteins allow for more site-specific labeling than NHS ester labeling of amine groups, which are encountered in large number in many proteins.

This maleimide is a thiol reactive dye. Please refer to our recommended labeling protocol to achieve modification of your protein with this reagent.



外观:

质谱 M+ 增量: 462.2

分子量: 462.26

CAS 编号: 2183473-32-5

分子式: $C_{24}H_{21}N_4BF_2O_3$

IUPAC 名称: 1-Phenyl-6-(2-(2-(N-maleimido)ethylaminocarbonyl)ethyl)borondipyrromethene

溶解度:

质量控制:

储存条件:

法律声明: 本產品僅供研究目的提供和銷售。本產品並未經過食品、藥品、醫療器械、化妝品等領域的安全性和效力測試，且未經明示或暗示授權用於其他任何用途，包括但不限於體外診斷、人類或動物用途，以及商業用途。

激发/吸收极大值, 530
纳米:

发射极大值, 纳
米: 548

荧光量子产率: 0.96

CF_{260} : 0.17

CF_{280} : 0.18