

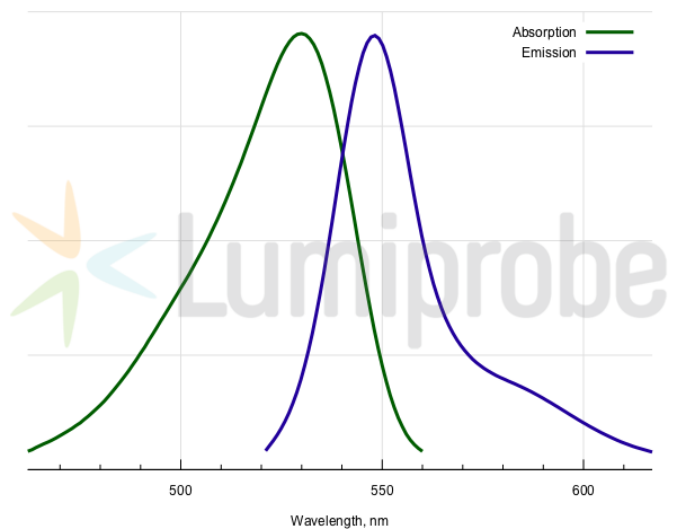
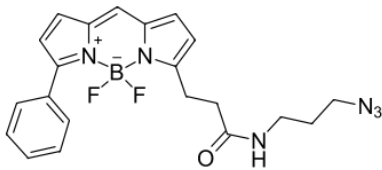
BDP R6G azide

<http://hk.lumiprobe.com/p/bdp-r6g-azide>

Borondipyrromethene (BDP) dyes are high performance fluorophores that exhibit excellent photostability and brightness. A number of BDP dyes is available that are tuned to match excitation and emission channels of classical xanthene and cyanine dyes.

BDP R6G is matched to R6G dye excitation and emission wavelengths. The fluorophore is an excellent alternative to R6G for various applications, including microscopy, fluorescence polarization assays, and two photon experiments.

Azide functional group allows to conjugate the fluorophore easily with various biomolecules, small molecules, and polymers using CuAAC or spAAC Click chemistry reactions.



外观:

分子量: 422.24

CAS 编号: 2183473-23-4

分子式: C₂₁H₂₁N₆BF₂O

IUPAC 名称: 3-(3-(4,4-Difluoro-5-phenyl-3a,4a-diaza-4-bora-s-indacen-3-yl)propionylamino)propylazide

溶解度:

质量控制:

储存条件:

法律声明: 本產品僅供研究目的提供和銷售。本產品並未經過食品、藥品、醫療器械、化妝品等領域的安全性和效力測試，且未經明示或暗示授權用於其他任何用途，包括但不限於體外診斷、人類或動物用途，以及商業用途。

激发/吸收极大 530
值, 纳米:

发射极大值, 548
纳米:

荧光量子产率: 0.96

CF₂₆₀: 0.17

CF₂₈₀: 0.18