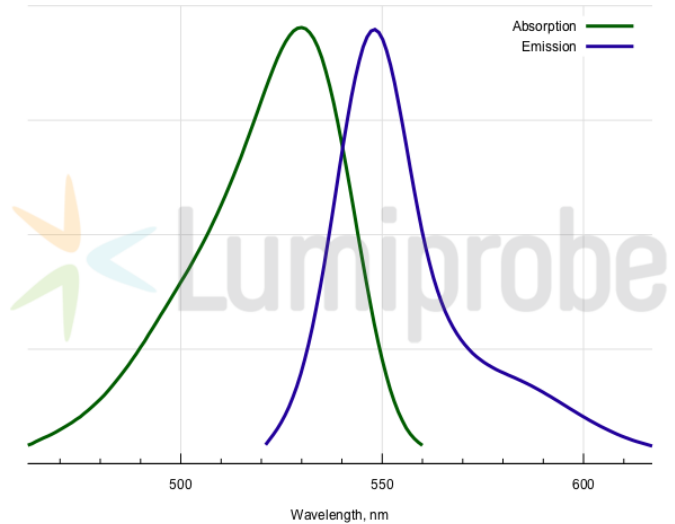
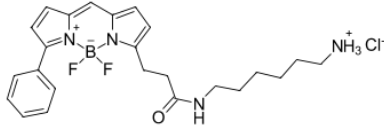


## BDP® R6G amine

<http://hk.lumiprobe.com/p/bdp-r6g-amine>

BDP R6G is a borondipyrromethene dye matching Rhodamine 6G (R6G) channel. This derivative of the fluorophore contains aliphatic amine group in salt form.

The amine group can be conjugated with electrophiles. Amines can also used in enzymatic transamination.



外观:

分子量: 474.78

CAS 编号: 2183473-06-3 (hydrochloride), 2183473-05-2

分子式: C<sub>24</sub>H<sub>30</sub>N<sub>4</sub>BClF<sub>2</sub>O

溶解度:

质量控制:

法律声明:

本產品僅供研究目的提供和銷售。本產品並未經過食品、藥品、醫療器械、化妝品等領域的安全性和效力測試，且未經明示或暗示授權用於其他任何用途，包括但不限於體外診斷、人類或動物用途，以及商業用途。

激发/吸收极大值, 纳米: 530

发射极大值, 纳米: 548

荧光量子产率: 0.96

CF<sub>260</sub>: 0.17

CF<sub>280</sub>: 0.18