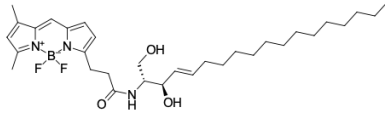


BDP® FL ceramide

<http://hk.lumiprobe.com/p/bdp-fl-ceramide-c3>

Ceramides are precursors of sphingolipids composed of sphingosine and a fatty acid joined by an amide bond. This BDP FL ceramide is a synthetic fluorescent lipid, a conjugate of green-emitting BDP FL fluorophore with sphingosine. Inside the cell, BDP FL ceramide is incorporated into the membranes of the Golgi apparatus, so this stain is widely used in cell biology to visualize the Golgi apparatus in living and fixed cells with fluorescence microscopy.



外观:	橙色半固體
分子量:	573.57
CAS 编号:	2730893-01-1
分子式:	$C_{32}H_{50}BF_2N_3O_3$
溶解度:	適合多種有機溶劑
质量控制:	NMR 1H 和 HPLC-MS (95+%)
储存条件:	收到後 $-20^{\circ}C$ 避光保存 24 個月。運輸: 室溫最多可保存3週。乾燥。避免長時間暴露在光線下。
法律声明:	本產品僅供研究目的提供和銷售。本產品並未經過食品、藥品、醫療器械、化妝品等領域的安全性和效力測試, 且未經明示或暗示授權用於其他任何用途, 包括但不限於體外診斷、人類或動物用途, 以及商業用途。

激发/吸收极大值, 纳米:	503
ϵ , 摩尔吸光系数, cm^{-1} :	92000
发射极大值, 纳米:	509
荧光量子产率:	0.97
CF_{260} :	0.015
CF_{280} :	0.027

BDP® 是 Lumiprobe 的商標