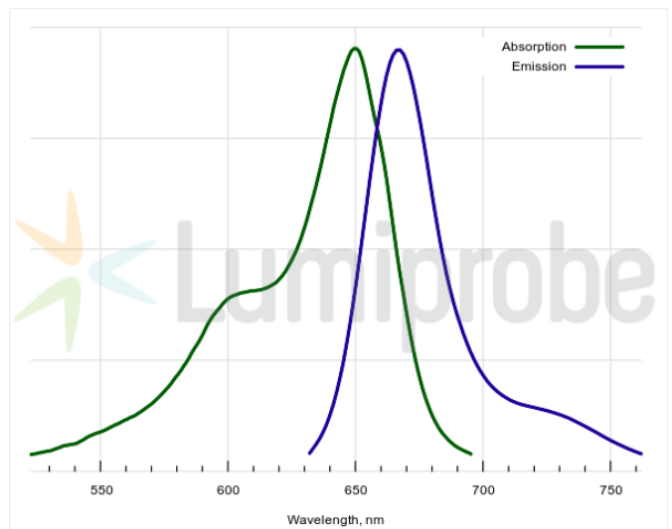
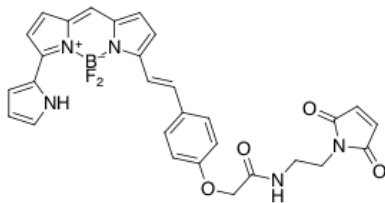


BDP® 650/665 maleimide

<http://hk.lumiprobe.com/p/bdp-650-665-maleimide>

BDP 650/665 is a bright, red-emitting fluorophore for Cyanine5 (Cy5) channel. The dye has a high molar extinction coefficient and a good emission quantum yield. The dye is moderately hydrophobic but can be used to label biomolecules in an aqueous environment, so it is a good alternative to Cy5.

Maleimide is a thiol-reactive group. The compound can be used for the labeling of cysteine residues of proteins and peptides, among other SH-containing molecules.



外观:

质谱 M+ 增量: 555.2

分子量: 555.34

分子式: C₂₉H₂₄N₅BF₂O₄

溶解度:

质量控制:

储存条件:

法律声明:

本產品僅供研究目的提供和銷售。本產品並未經過食品、藥品、醫療器械、化妝品等領域的安全性和效力測試，且未經明示或暗示授權用於其他任何用途，包括但不限於體外診斷、人類或動物用途，以及商業用途。

激发/吸收极大值, 纳米: 649

ε, 摩尔吸光系数, cm⁻¹: 94000

发射极大值, 纳米: 667

荧光量子产率: 0.52

CF₂₆₀: 0.04

CF₂₈₀: 0.04