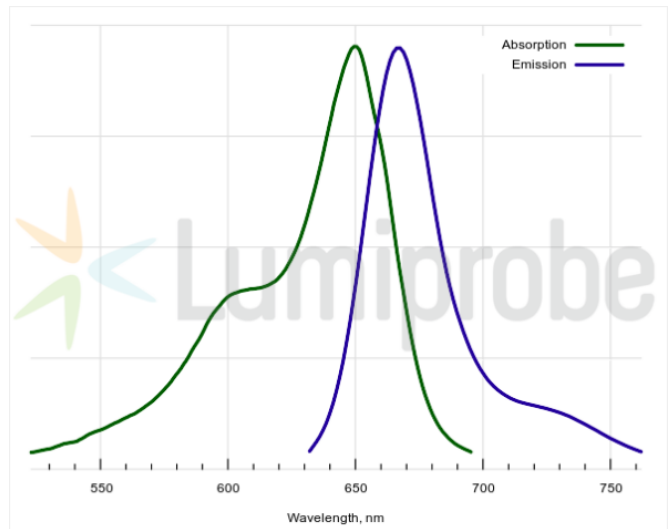
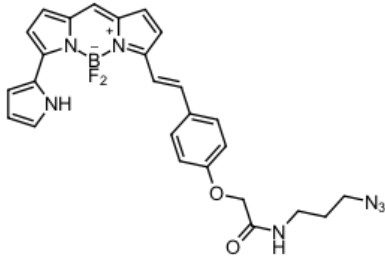


BDP® 650/665 azide

<http://hk.lumiprobe.com/p/bdp-650-665-azide>

BDP 650/665 is a bright red-emitting borondipyrromethene dye compatible with the Cy5 channel found on many instruments. This is an azide derivative of BDP 650/665. It can be conjugated with terminal alkynes via copper-catalyzed reaction or with cycloalkynes via copper-free click chemistry.

BDP 650/665 azide can be conjugated with various terminal alkynes using copper-catalyzed click chemistry or cycloalkynes using a copper-free reaction.



外观:

分子量: 515.32

分子式: $C_{26}H_{24}N_7BF_2O_2$

溶解度:

质量控制:

法律声明: 本產品僅供研究目的提供和銷售。本產品並未經過食品、藥品、醫療器械、化妝品等領域的安全性和效力測試，且未經明示或暗示授權用於其他任何用途，包括但不限於體外診斷、人類或動物用途，以及商業用途。

激发/吸收极大值, 纳米: 649

ϵ , 摩尔吸光系数, cm^{-1} : 94000

发射极大值, 纳米: 667

荧光量子产率: 0.52

CF_{260} : 0.04

CF_{280} : 0.04