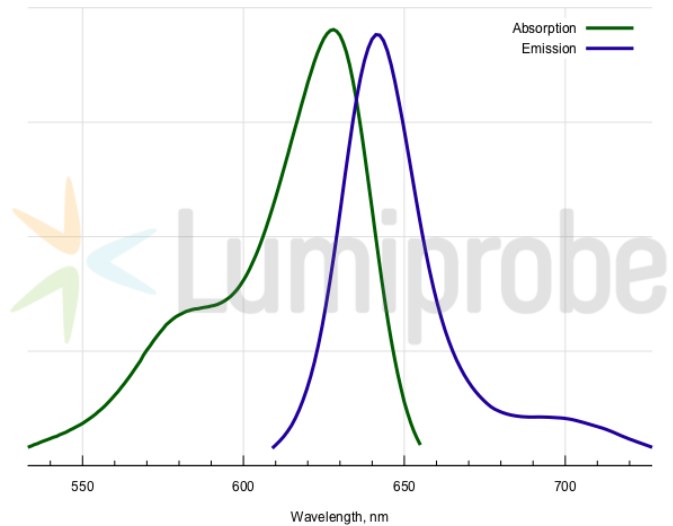
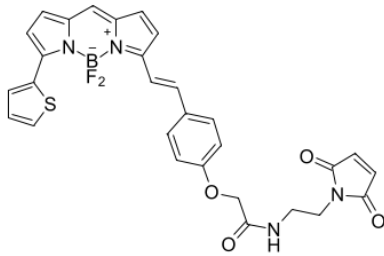


## BDP® 630/650 maleimide

<http://hk.lumiprobe.com/p/bdp-630-650-maleimide>

BDP 630/650 is a far red emitting borondipyrromethene based fluorophore for the Cyanine5 channel. Because of its relatively long lifetime of the excited state, this dye is particularly useful for fluorescence lifetime related measurements.

The reactive maleimide moiety allows to attach the dye to thiol groups in biomolecules, especially proteins and peptides.



外观:

质谱 M+ 增量:

572.2

分子量:

572.39

CAS 编号:

2183473-31-4

分子式:

C<sub>29</sub>H<sub>23</sub>N<sub>4</sub>BF<sub>2</sub>O<sub>4</sub>S

溶解度:

质量控制:

储存条件:

法律声明:

本產品僅供研究目的提供和銷售。本產品並未經過食品、藥品、醫療器械、化妝品等領域的安全性和效力測試，且未經明示或暗示授權用於其他任何用途，包括但不限於體外診斷、人類或動物用途，以及商業用途。

激发/吸收极大值, 纳米: 628

ε, 摩尔吸光系数, cm<sup>-1</sup>: 97000

发射极大值, 纳米: 642

荧光量子产率: 0.91

CF<sub>260</sub>: 0.029

CF<sub>280</sub>: 0.035