

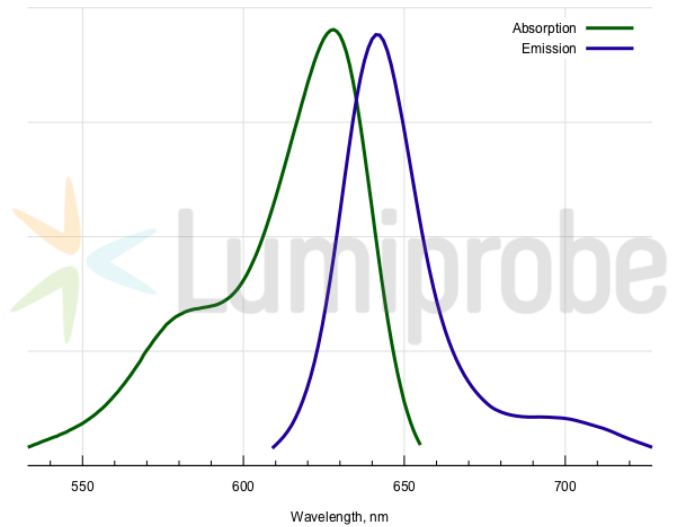
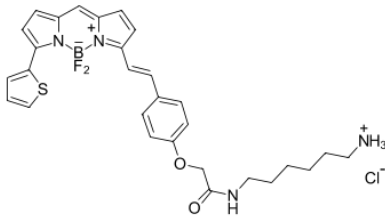
## BDP® 630/650 amine

<http://hk.lumiprobe.com/p/bdp-630-650-amine>

BDP 630/650 is a far red emitting, borondipyrromethene based fluorophore. The dye is tuned to match the standard Cy5 channel, and can be used as an alternative to [Cyanine5](#) and [sulfo-Cyanine5](#). Compared to cyanines, BDP 630/650 possesses a longer fluorescence lifetime which is important for fluorescence anisotropy measurements.

BDP 630/650 has a brightness similar to cyanines, and an exceptional photostability.

This amine derivative is useful for the reaction with electrophiles, and for enzymatic transamination labeling.



外观:

分子量: 584.92

分子式:  $C_{29}H_{32}N_4BClF_2O_2S$

溶解度:

质量控制:

储存条件:

法律声明:

本產品僅供研究目的提供和銷售。本產品並未經過食品、藥品、醫療器械、化妝品等領域的安全性和效力測試，且未經明示或暗示授權用於其他任何用途，包括但不限於體外診斷、人類或動物用途，以及商業用途。

激发/吸收极大值, 纳米: 628

$\epsilon$ , 摩尔吸光系数,  $cm^{-1}$ : 97000

发射极大值, 纳米: 642

荧光量子产率: 0.91

$CF_{260}$ : 0.029

$CF_{280}$ : 0.035