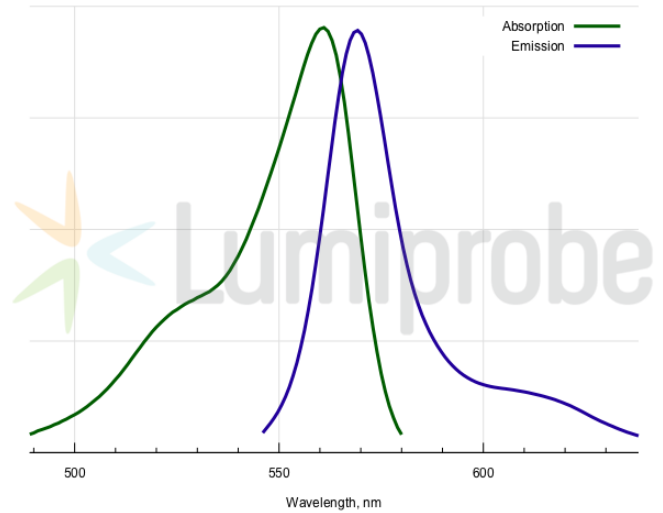
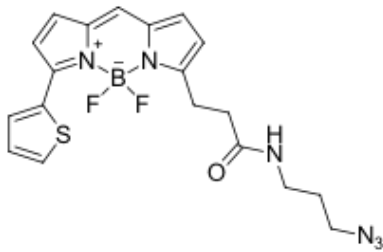


## BDP 558/568 azide

<http://hk.lumiprobe.com/p/bdp-558-568-azide>

BDP 558/568 azide is a borondipyrromethene dye with azide functional group for click chemistry. Its spectra are close to Cyanine3 channel. The fluorophore has been used for lipid tracking as BDP 558/568 C<sub>12</sub>, but azide functional groups allow easy conjugation with a wide variety of other molecules of interest.



外观:

质谱 M+ 增量: 428.1

分子量: 428.27

分子式: C<sub>19</sub>H<sub>19</sub>N<sub>6</sub>BF<sub>2</sub>OS

溶解度:

质量控制:

储存条件:

法律声明:

本產品僅供研究目的提供和銷售。本產品並未經過食品、藥品、醫療器械、化妝品等領域的安全性和效力測試，且未經明示或暗示授權用於其他任何用途，包括但不限於體外診斷、人類或動物用途，以及商業用途。

激发/吸收极大值, 纳米: 561

ε, 摩尔吸光系数, cm<sup>-1</sup>: 84400

发射极大值, 纳米: 569

荧光量子产率: 0.68

CF<sub>260</sub>: 0.00

CF<sub>280</sub>: 0.07