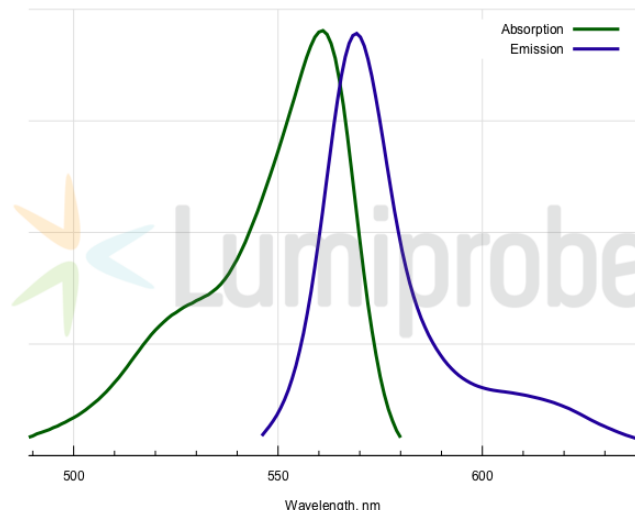
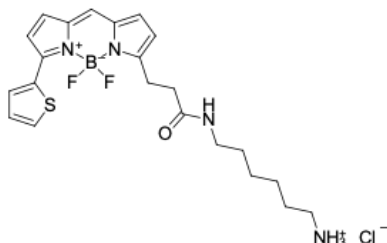


BDP® 558/568 amine

<http://hk.lumiprobe.com/p/bdp-558-568-amine>

Primary amine is a versatile functional group for bioconjugation. It is reactive against activated carboxylic acid derivatives like pentafluorophenyl esters and acyl halogenides, other electrophiles like epoxides, and Michael acceptors like acrylates. It can aminate carbonyl compounds like aldehydes and ketones in reductive conditions.

BDP 558/568 is a universal borondipyrromethene dye with an emission in the orange/yellow part of the spectrum.



外观:

分子量: 480.81

分子式: $C_{22}H_{28}N_4BClF_2OS$

溶解度:

质量控制:

储存条件:

法律声明: 本產品僅供研究目的提供和銷售。本產品並未經過食品、藥品、醫療器械、化妝品等領域的安全性和效力測試，且未經明示或暗示授權用於其他任何用途，包括但不限於體外診斷、人類或動物用途，以及商業用途。

激发/吸收极大值, 纳米: 561

ϵ , 摩尔吸光系数, cm^{-1} : 84400

发射极大值, 纳米: 569

荧光量子产率: 0.68

CF_{260} : 0.00

CF_{280} : 0.07