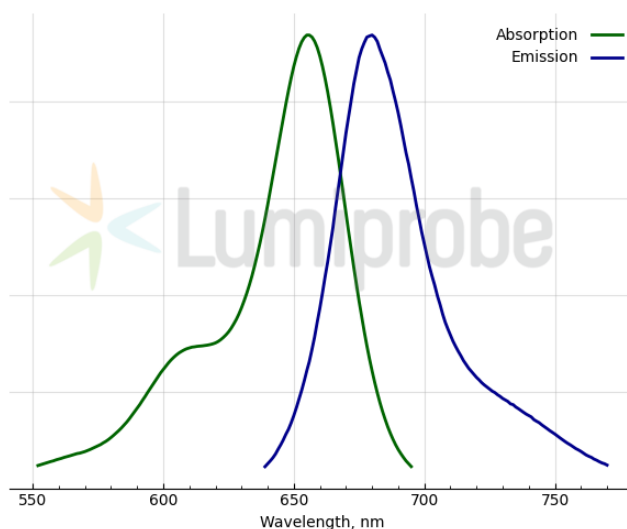
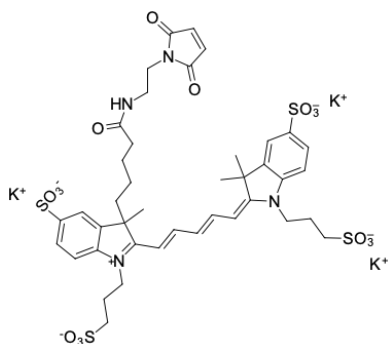


AF 647 maleimide

<http://hk.lumiprobe.com/p/af-647-maleimide>

AF 647 maleimide is a thiol-reactive dye for labeling of protein SH groups, and it can be used to attach AF 647 fluorophore to proteins and peptides containing cysteine residues, as well as to other thiolated molecules (such as thiol-containing oligonucleotides). Cystines should be reduced with TCEP (tris-carboxyethylphosphine) or with another appropriate reductant prior to the labeling.

AF 647 is a bright, far-red-emitting fluorescent dye with high fluorescence quantum yield and photostability. AF 647 is a water-soluble, pH-insensitive dye. The spectrum of AF 647 is far from the green-yellow wavelengths, which makes this fluorophore indispensable for the microscopy of tissues with high autofluorescence.



| | |
|-------|---|
| 外观: | 深藍色粉末 |
| 分子量: | 1081.40 |
| 分子式: | $C_{41}H_{47}K_3N_4O_{15}S_4$ |
| 溶解度: | 適合 DMSO、DMF |
| 质量控制: | NMR 1H 和 HPLC-MS (90+%) |
| 储存条件: | 收到後 -20°C 避光保存 12 個月。運輸: 室溫最多可保存3週。乾燥。 |
| 法律声明: | 本產品僅供研究目的提供和銷售。本產品並未經過食品、藥品、醫療器械、化妝品等領域的安全性和效力測試, 且未經明示或暗示授權用於其他任何用途, 包括但不限於體外診斷、人類或動物用途, 以及商業用途。 |

| | |
|----------------------------------|--------|
| 激发/吸收极大值, 纳米: | 655 |
| ϵ , 摩尔吸光系数, cm^{-1} : | 191800 |
| 发射极大值, 纳米: | 680 |
| 荧光量子产率: | 0.15 |
| CF_{260} : | 0.09 |
| CF_{280} : | 0.08 |