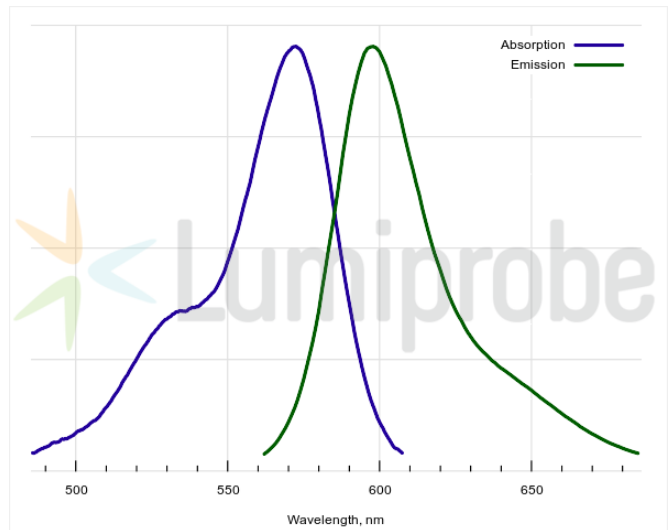
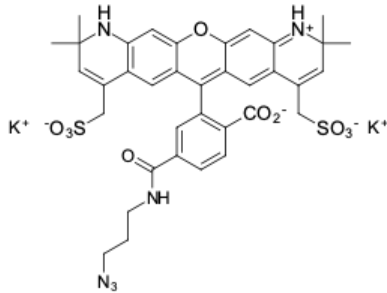


## AF 568 azide

<http://hk.lumiprobe.com/p/af-568-azide-6>

AF 568 is a fluorescent dye with excitation peak at 572 nm and emission peak at 598 nm. AF 568 azide is a photochemically stable, specific, and highly efficient tool for labeling biomolecules. It is water soluble and insensitive to pH changes between pH 4 and pH 10. The reaction conditions do not require high temperature or pressure.

Labeling with AF 568 azide via click chemistry is a powerful technique for the production of bioconjugates. AF 568 azide is an excellent tool for imaging purposes, including fluorescent microscopy and flow cytometry, where label brightness and photostability are essential.



外观:

质谱 M+ 增量: 776.2

分子量: 853.02

分子式: C<sub>36</sub>H<sub>34</sub>N<sub>6</sub>K<sub>2</sub>O<sub>10</sub>S<sub>2</sub>

溶解度:

质量控制:

储存条件:

法律声明:

本產品僅供研究目的提供和銷售。本產品並未經過食品、藥品、醫療器械、化妝品等領域的安全性和效力測試，且未經明示或暗示授權用於其他任何用途，包括但不限於體外診斷、人類或動物用途，以及商業用途。

激发/吸收极大值, 纳米: 572

ε, 摩尔吸光系数, cm<sup>-1</sup>: 94238

发射极大值, 纳米: 598

荧光量子产率: 0.912

CF<sub>260</sub>: 0.4

CF<sub>280</sub>: 0.32