

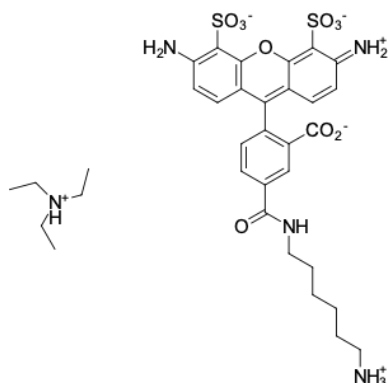
AF 488 amine

<http://hk.lumiprobe.com/p/af-488-amine-5>

AF 488 is a stable dye over a broad pH range (from 4 to 10) with the fluorescence peak in the green region (at 519 nm).

Conjugates of biomolecules with AF 488 can be used in flow cytometry, for example in multicolor staining. AF 488 is also used in cell microscopy due to its high photostability.

AF 488 amine is soluble in water and can be conjugated with electrophiles and participate in enzymatic transamination.



外观:

分子量: 733.87

分子式: $C_{33}H_{43}N_5O_{10}S_2$

溶解度:

质量控制:

储存条件:

法律声明: 本產品僅供研究目的提供和銷售。本產品並未經過食品、藥品、醫療器械、化妝品等領域的安全性和效力測試，且未經明示或暗示授權用於其他任何用途，包括但不限於體外診斷、人類或動物用途，以及商業用途。

激发/吸收极大值, 纳米: 495

ϵ , 摩尔吸光系数, cm^{-1} : 71800

发射极大值, 纳米: 519

荧光量子产率: 0.91

CF_{260} : 0.16

CF_{280} : 0.10